

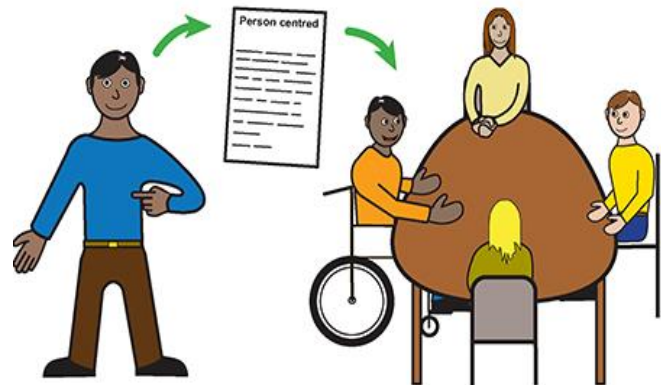
Share your views on disability

Become a Collaboration in Action Forum Member to help shape local services.

What is it?

Healthwatch Essex captures the lived experiences of people who use health and social care services in the county.

Over the next 3 years, we are working with Essex County Council to deliver a new model of service improvement, representing adults with disabilities by using lived experience more effectively.



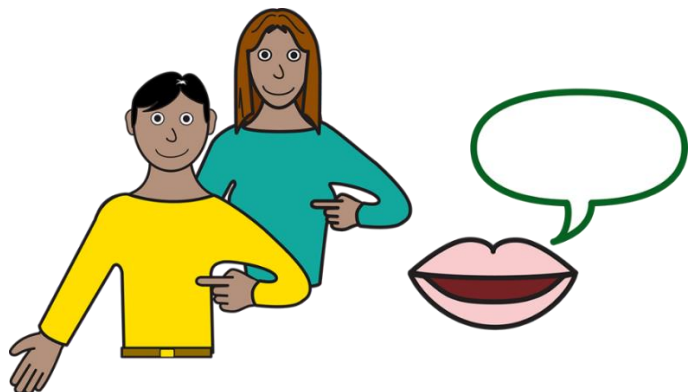
Feeding into council plans, we are developing a 'Collaboration in Action' Forum, which will consist of volunteers and Essex County Council staff. We are passionate about collaboration and ensuring that citizen voices and lived experience is at the heart of everything we do.

Member Role

By being a member of this forum, you will have the opportunity to have your voice heard at a senior level within Essex County Council, in the forward planning of co-production activities and council long-term agendas.

Your role would involve:

- Attendance at quarterly forum meetings.
- Participation in coproduction activities to help understand the needs of people living with a disability.
- Use your social networks to capture the views of others, to feed into the forum.



For more details, please contact daniel.potts@healthwatchessex.org.uk or call us on 01376 572 829.

In Partnership with